

The Ilisu Dam Project and its violation of life rights



Ercan Ayboga

Initiative to Keep Hasankeyf Alive

Figures on the Ilisu Dam and Hydroelectric Powerplant Project:

Height of the dam: 135 m

Length of the dam reservoir: 136 km

Area of dam reservoir: 313 km²

Capacity: 10.4 Mrd m³ (10.4 km³)

Energy Capacity: 1200 MW (per hour)

Annual energy production: 3833 Gwh/Jahr → 4th of Turkey

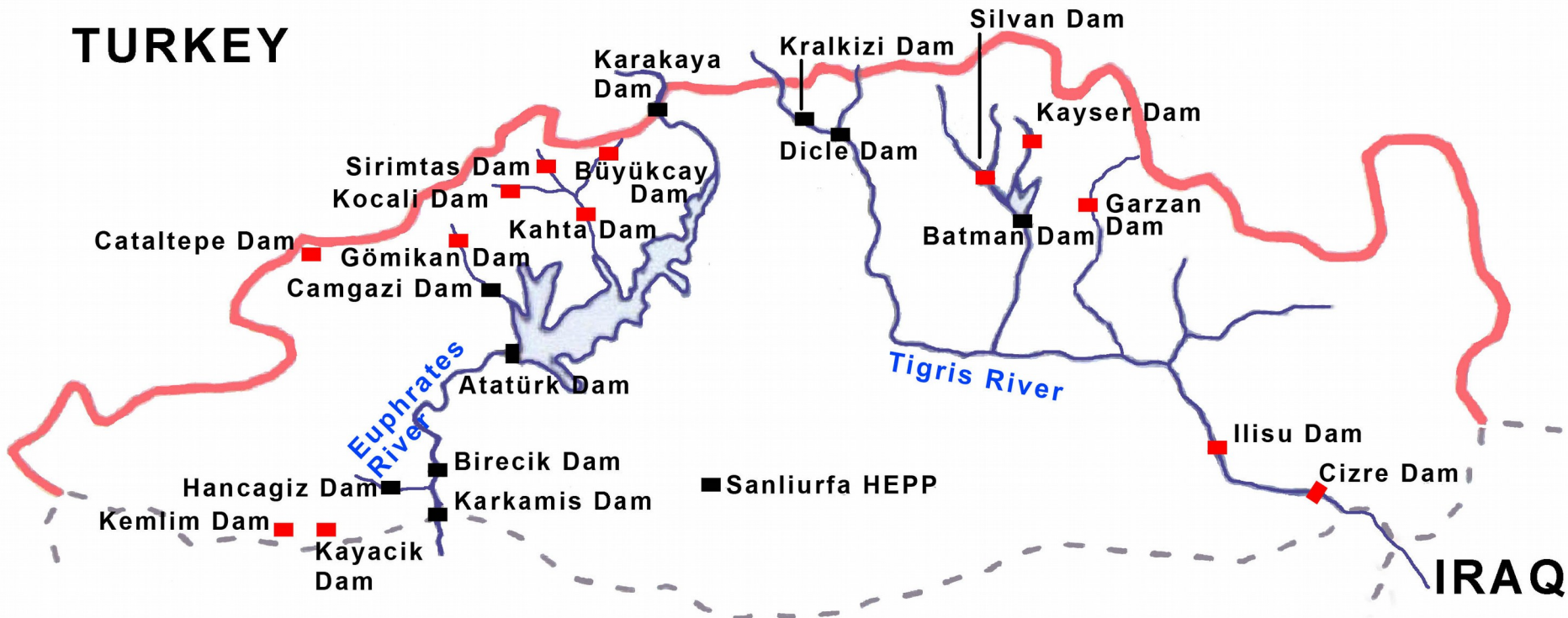
Costs: 1,2 Mrd € Construction + 0,8 Mrd € Resettlement

An aerial photograph showing the Ilisu Dam, a large concrete structure with multiple arches, spanning a wide river. The surrounding landscape is a mix of agricultural fields and some urban development. The sky is clear and blue.

Ilisu Project is part of the Southeastern Anatolia Project (GAP)

- GAP started in 1982
- Costs: 32 Billion US Dollar
- Dams/HEPP's, irrigation systems and their facilities
- Primary aim: Electricity and Agricultural Products for export
- broader aim: Development of the „poor Southeast Turkey“ (North Kurdistan) and increase the exports
- to date approx. 80% of the hydrological power capacity and 23% of the irrigation completed

Locations of existing and planned dams/HEPPs of the Southeastern Anatolia Project (GAP)



■ Existing Dams

■ Planned Dams

Initiative to Keep Hasankeyf Alive
www.hasankeyfgirisimi.com



Note: The description „dam“ includes also a hyroelectric power plant (HEPP)

Ilisu dam project and affected cities/municipalities



Prepared by
the Initiative to Keep Hasankeyf Alive

50 km

**Totally up to
100.000 people
would be affected!**

**40% landless
people**





The region has broadly a subsistence economy which would be destroyed or subsistued by a export economy (irrigated agriculture)

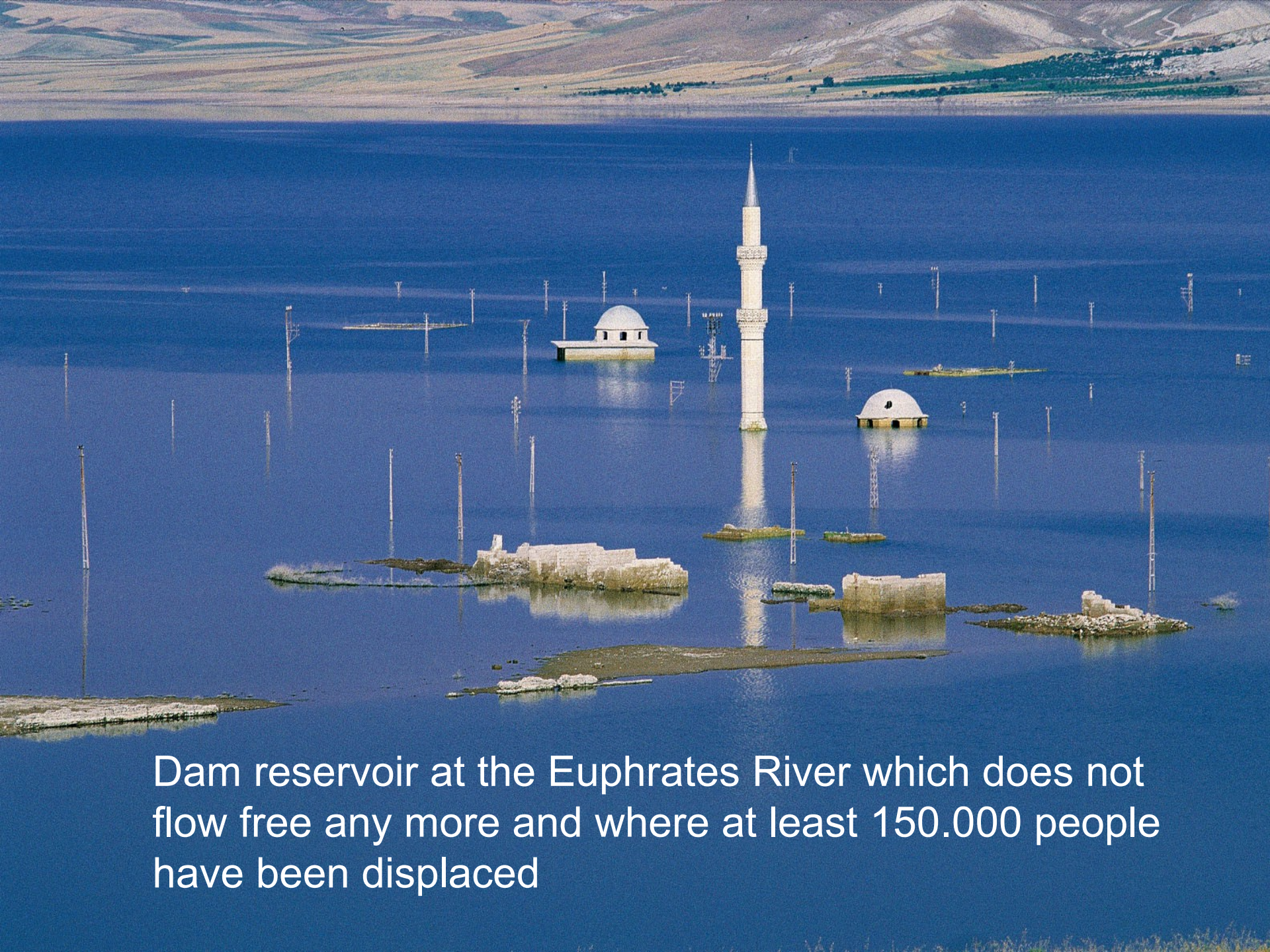


Fishing is a secondary income opportunity, but not negligible.





80 of the affected villages have been burnt down in the 90ies
→ conflict area! Participation and request for rights hardly possible



Dam reservoir at the Euphrates River which does not flow free any more and where at least 150.000 people have been displaced

Mesopotamia → cradle of civilizations!



View from the rock castle of Hasankeyf which is 10.000 years old!



Traces of 20 eastern and western cultures

Upper city of Hasankeyf - in the Middle Age more than 15.000 people lived here.



A symbol for the Middle Age area: Zeynel Bey Mausoleum.

A tender for the relocation of this Mausoleum to the Archaeological Park close to New-Hasankeyf has failed!



In Tigris Valley 289 are archaeological sites of which 14 are excavated.

Only in half of the affected surveys are done!

Actually we do not know what we will loose



Bones of two lovers -
excavated in
Bismil/Diyarbakir, 2007

Tigris Valley - North of Ilisu dam site

Dam would destroy approx. 400 km²
of riverine habitat



It can not be said what we will loose ecologically, almost no researches in the valleys

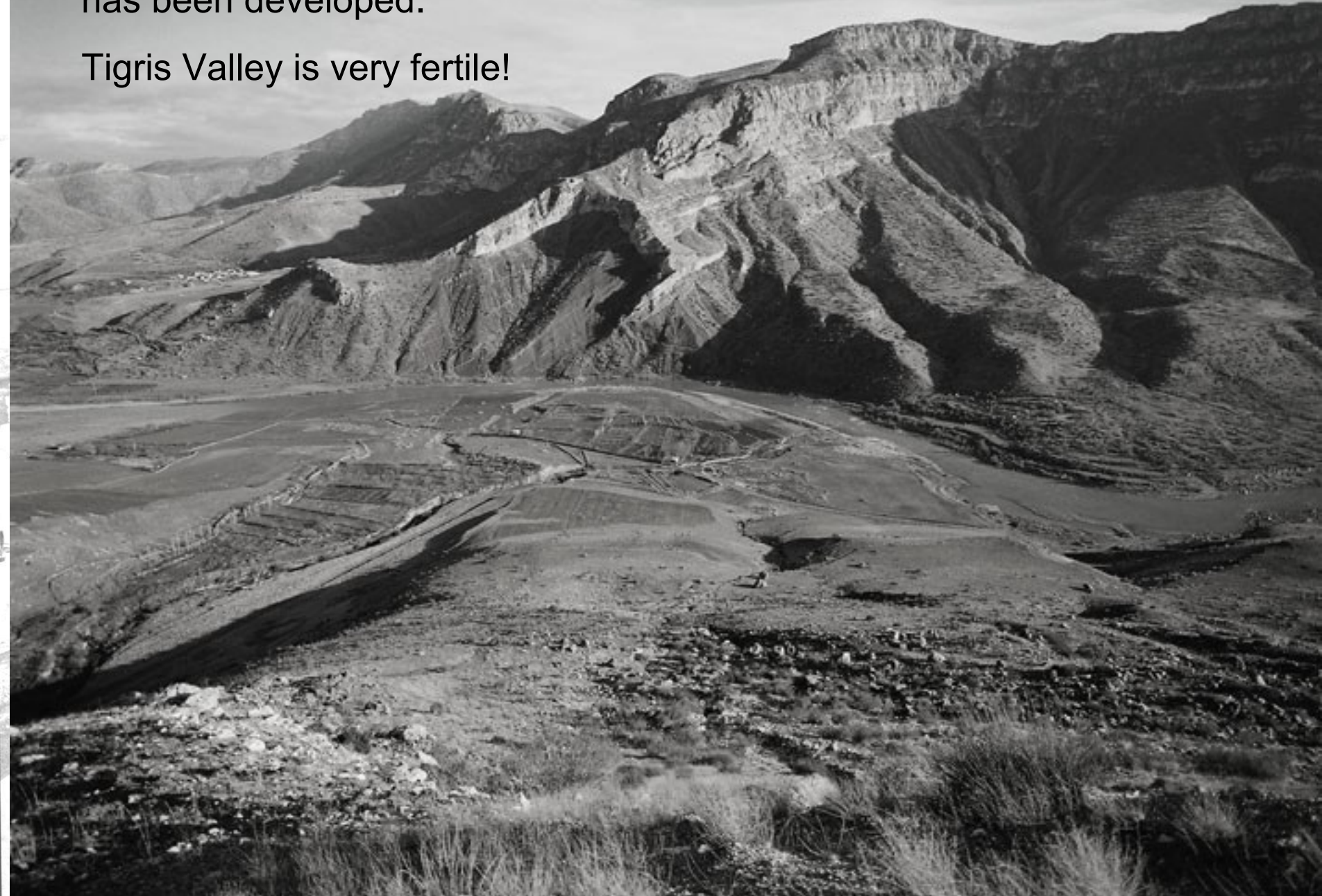




Soft shell turtle - one of the endangered species

10 km east of Hasankeyf - In Upper Mesopotamia the first agriculture has been developed.

Tigris Valley is very fertile!





The regional climate would change → more humid, less snowfall,
uncalculated precipitation distribution
→ Impacts on agriculture (experienced around the Euphrates)

International Impacts



Ilisu will have huge impacts on Iraq whose drinking water supply and irrigation systems depend mainly on Tigris!



Particularly the Mesopotamian Marshlands would be affected.

Marshlands have been restored partly after 2003.





Representatives of Marsh Arabs in Hasankeyf in 2012.



4th Aug 2006,
Hasankeyf: Protest
concert against the
groundbreaking
ceremony in Ilisu the
next day



Opening of the 1st Hasankeyf Park of Hope and Solidarity, March 2007



200 affected people went on March 4th, 2008 to Ankara, to protest the German, Austrian and Swiss European embassies.

They criticized the decision on export credit guarantees and declared they would come to Europe and apply for asylum.





Demonstration in October 2008 with 5000 people. After this the process of withdrawal by the three european governments started. In 7th July, 2009 the export credit guarantee was cancelled completely!



Warum wollen Sie unsere Stadt
überfluten?
Ilisu-Staudamm Türkei

Protests happened
also in Europe - here
the occupation of the
Brandenburger Tor in
March 2007

Warum wollen Sie unsere Stadt
überfluten?
Ilisu-Staudamm Türkei



Protest against the Deka-Bank and Sparkasse in 10 cities of Germany.



5th World Water Forum in Istanbul, March 2009

- Protests organized by Another Water Management is Possible
→ see www.alternatifsuforumu.org
- Cooperation with international water movements
→ Alternative Water Forum (20-22 March 2009) and other protests



Violence against protests - many arrestations

→ real background of WWC:
control of water resources and
services by private companies





**Demonstration
in Istanbul on
25th April 2010
of several dam
affected
movements!**



An aerial photograph of a city, likely Istanbul, featuring a prominent multi-arched bridge spanning a wide river. The city's buildings and infrastructure are visible on both banks of the river, and the background shows a hazy horizon.

On the 7th of July 2009 the governments of Germany, Austria and Switzerland cancelled the approval of the credit guarantee!

→ historical step for the export credit guarantee economy!

Turkey tried to find finance from China in end of 2009

→ without success which is also unique!

BUT: In Jan/Feb 2010 Turkey organized the finance with credit guarantee by itself and by loans from three Turkish banks (Garantibank, Akbank, Halkbank)

**Construction in Ilisu
and Hasankeyf has
started in spring 2010!**





Construction site 2012





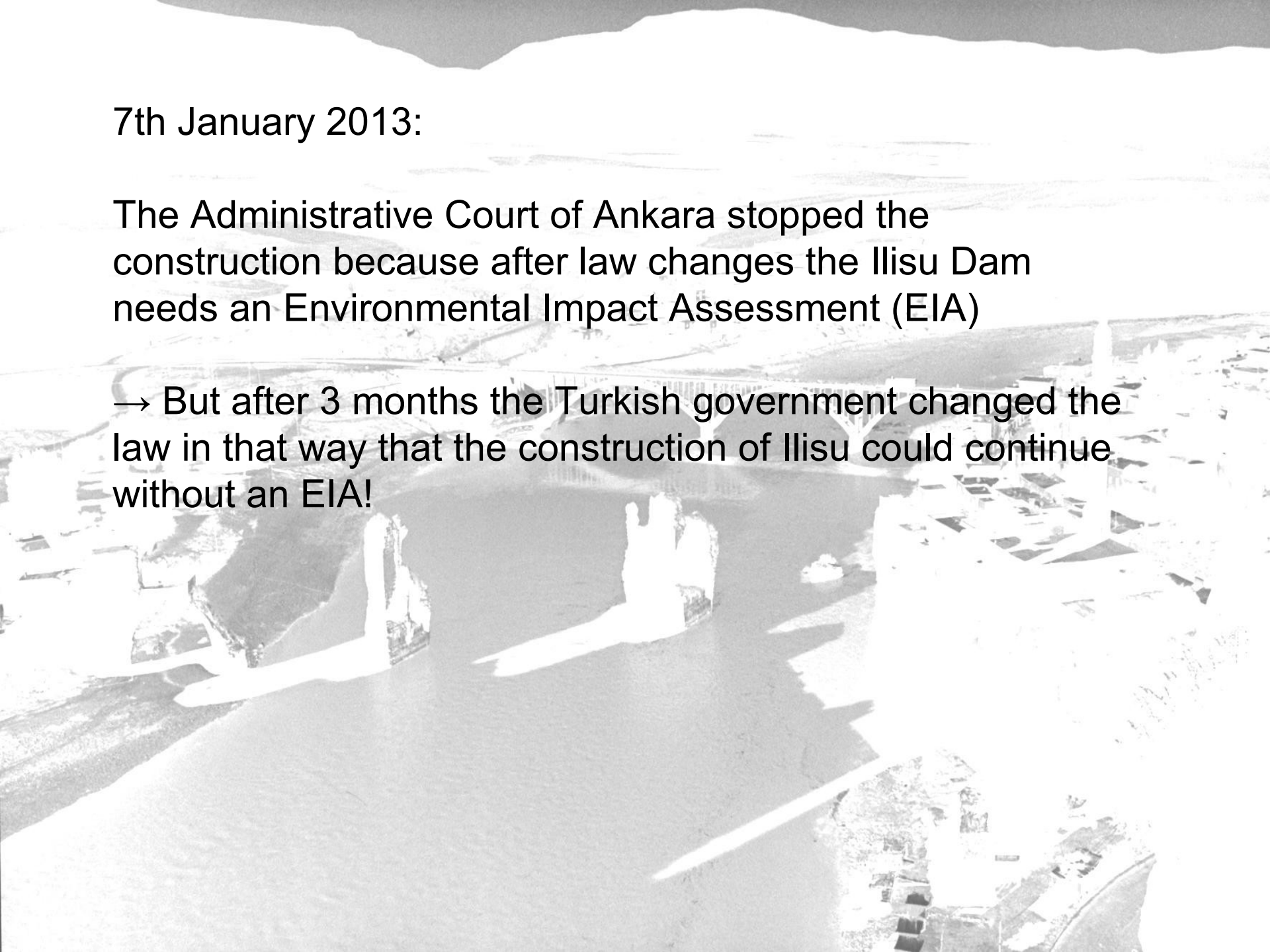
Camp in Hasankeyf, September 2012



7th January 2013:

The Administrative Court of Ankara stopped the construction because after law changes the Ilisu Dam needs an Environmental Impact Assessment (EIA)

→ But after 3 months the Turkish government changed the law in that way that the construction of Ilisu could continue without an EIA!



The Ilisu Dam has been halted in August 2014 after all workers resigned. Previously two important contractors of the dam construction had been detained by the PKK-Guerilla HPG.

11.11.2014 – Ilisu Dam site



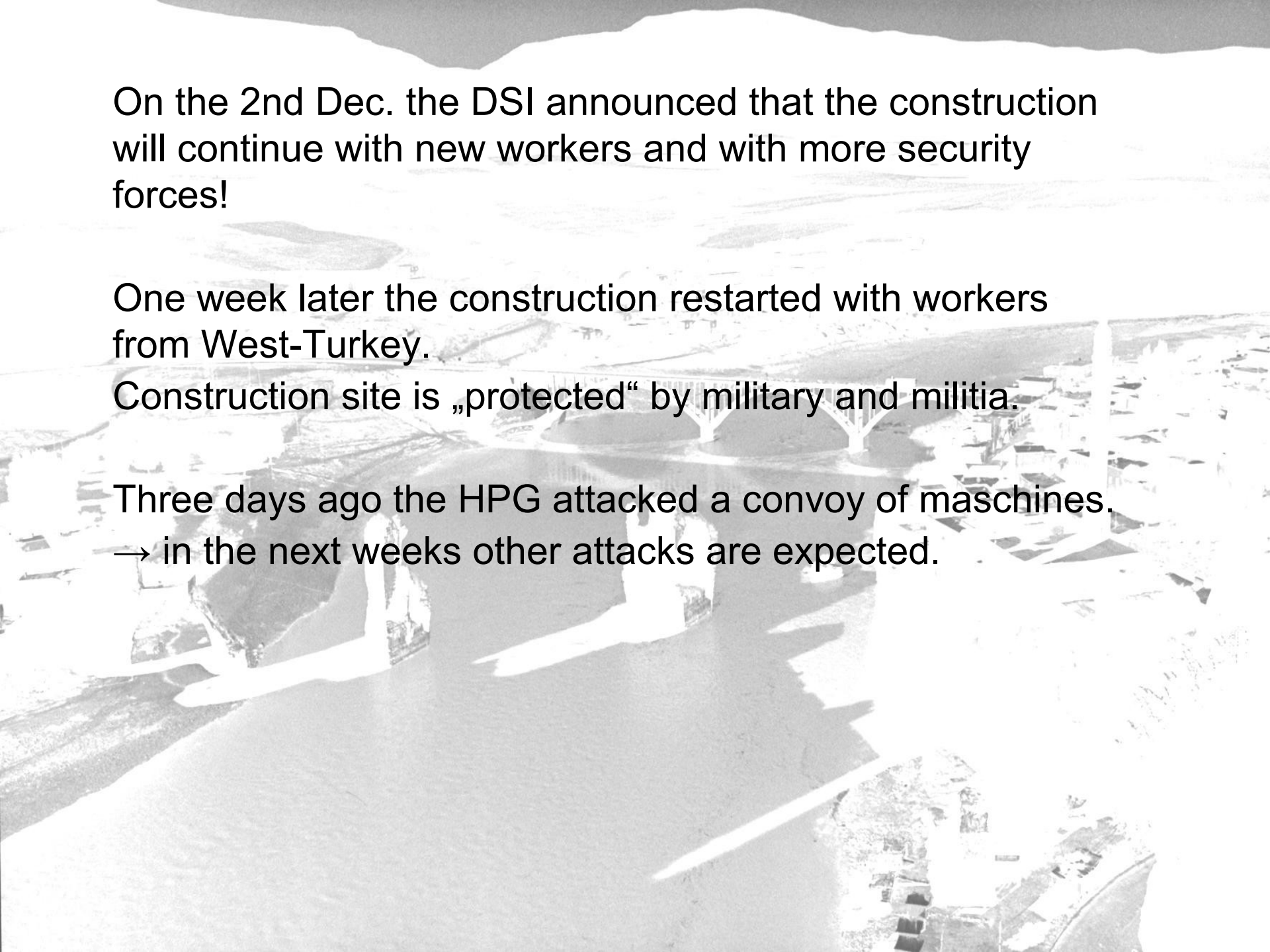




Right: The tunnel for the diversion of the river



New Ilisu village – No new income opportunities for the resettled people

An aerial photograph showing a large-scale construction project. A wide river flows through the center of the image. A long, multi-arched bridge is under construction, spanning across the river. The bridge's structure is visible, with several concrete piers and arches. The surrounding area includes some buildings and infrastructure on the right side, and a more open, possibly agricultural or undeveloped area on the left. The overall scene is a high-angle view of a significant engineering project in progress.

On the 2nd Dec. the DSI announced that the construction will continue with new workers and with more security forces!

One week later the construction restarted with workers from West-Turkey.

Construction site is „protected“ by military and militia.

Three days ago the HPG attacked a convoy of machines.

→ in the next weeks other attacks are expected.

An aerial photograph of a large, multi-arched bridge spanning a wide river. The bridge has several prominent arches and is surrounded by a town with buildings and a tall chimney stack. The background shows a hilly landscape under a bright sky.

Spas / Thanks!

**More information:
www.hasankeyfgirisimi.net
www.stopilisu.com**